

Information Sheet

Primer Flush Kits for LiquiPro Pumps

... For Aqueous Solutions

Kit No. 37393 for
.375" O.D. Tubing

Kit No. 37399 for
.5" O.D. Tubing

- For Priming and/or Flushing Pump Liquid End
- Easy Field Installation
- Polypropylene & Ultra-High Molecular Weight Polyethylene Construction

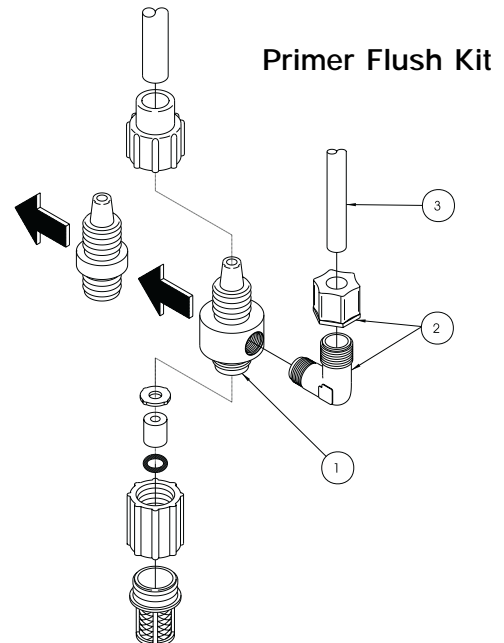
PRIMING

By equalizing the pressure on the suction and discharge sides of the pump head, the need to disconnect tubing to bleed air from the pump is eliminated. Pump priming is reduced to the opening of a valve.

FLUSHING

For solutions which have a tendency to clog valves by congealing or settling, the primer flush kit makes it easy to flush the liquid end whenever the pump is to be shut down.

Or, with the addition of a small solenoid valve and repeat cycle timer (for example, an LMI Remote Auto-Flush Controller), an LMI pump can be equipped so that it is periodically automatically flushed.



Ref. No.	Part No.	Description	Quantity	
			Kit No. 37393	Kit No. 37399
1	37543	Flush Valve Body w/washer 0.375" O.D. Tubing	1	0
	37544	Flush Valve Body w/washer 0.5" O.D. Tubing	0	1
2	10834	Elbow Connector Assembly	1	1
3	10342-16	Tubing, Polyethylene 16 ft (4.9 m)	1	1

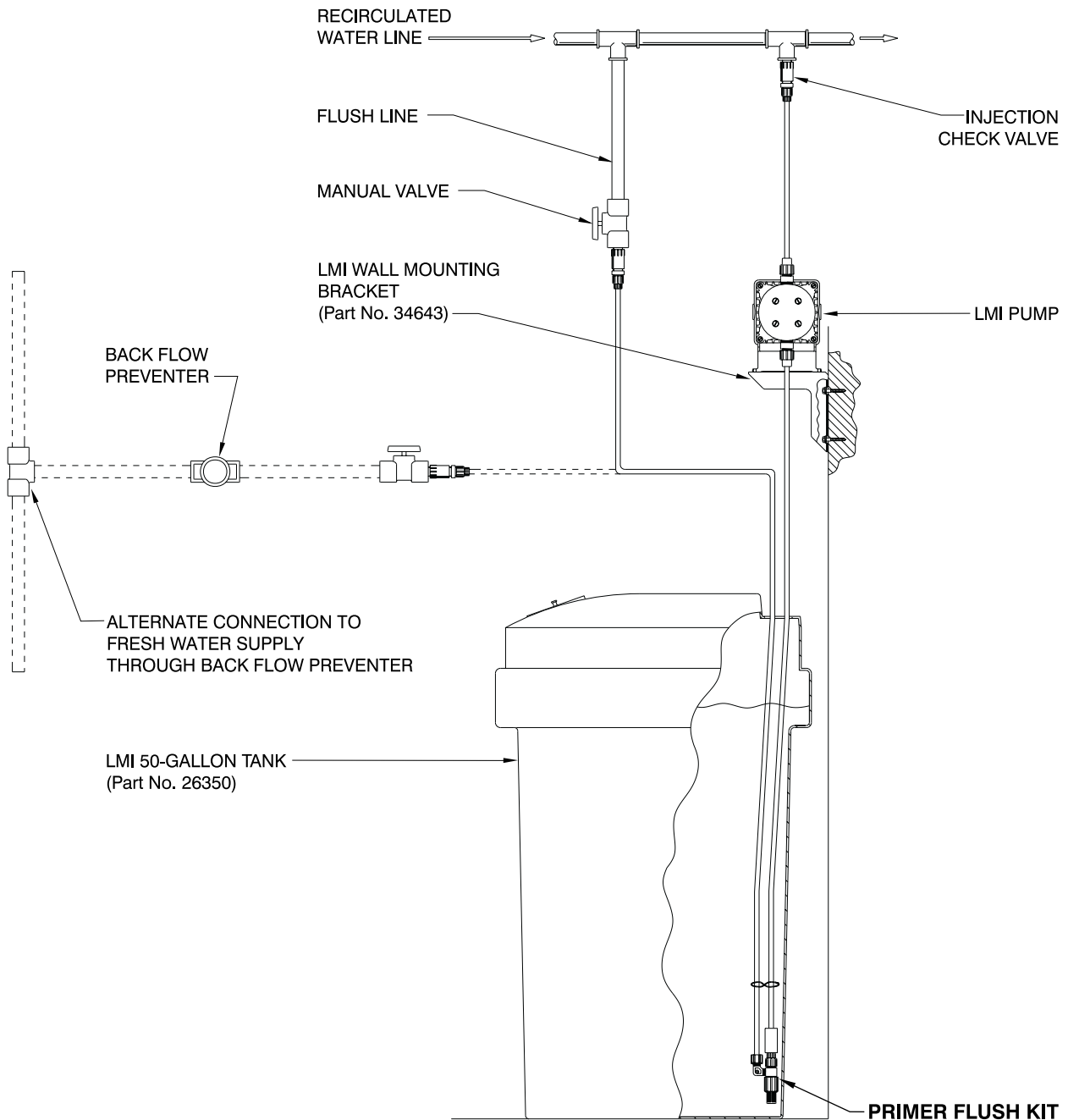


8 Post Office Square
Acton, MA 01720 USA
TEL: (978) 263-9800
FAX: (978) 264-9172
<http://www.lmipumps.com>



TYPICAL INSTALLATION

NOTE: Flush line connection to fresh water supply should be at least 5 psi (0.34 Bar) higher than injection point.



Primer Flush Connection